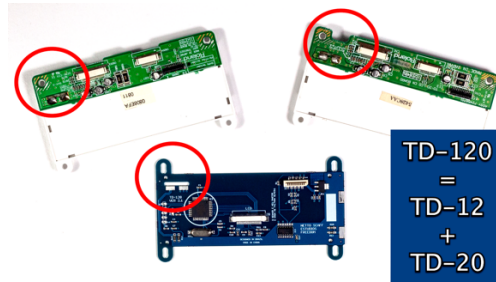


PCB / TD-120 - Installation Manual

Thank you for your purchase!

Thank you for shopping with us. The TD-120 PCB is a Protocol Converter Board for the Roland TD12, TD20 and TD20X Modules that had display problems. There is a difference between the original display of the TD12 and the TD20. But the TD-120 has adjusted the board so that it is compatible with both models.



PCB TD-120

With the TD-120 PCB we now have three mounting options. White, blue and the original color.



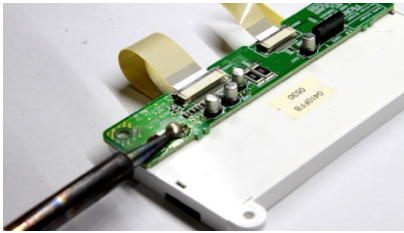
Opening your Roland Module Flat Cables – Caution

We suggest you take several photos of each stage of opening your module. We also recommend using small glasses to place the screws as you dismantle it. Due to their age, flat cables can become oxidized and cause poor contact. We recommend replacing all of them.

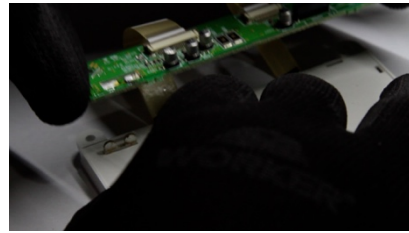


Restoring the Original Look/Color

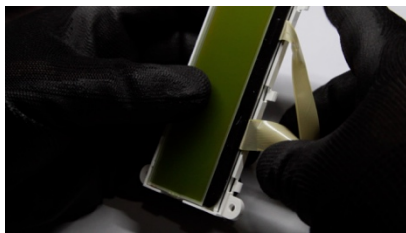
With the TD-120 PCB you can restore the original color and look. This process requires experience with a soldering iron.



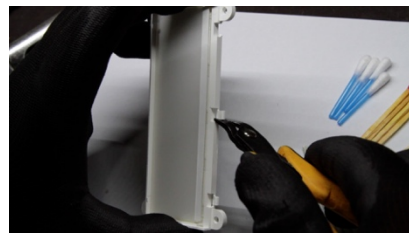
1 - Remove the solder



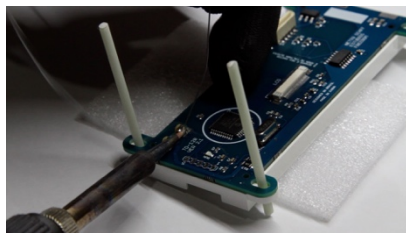
2- Remove the board



3 - Break the flaps and remove the glass



4 - Remove the tabs permanently



5 - Solder the TD-120 PCB to the Original Backlight



6-Make 2 light masks using black tape



7-Fix the light masks to the edges



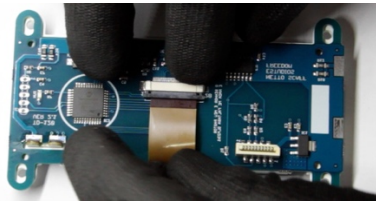
8-Use double-sided tape to secure the glass



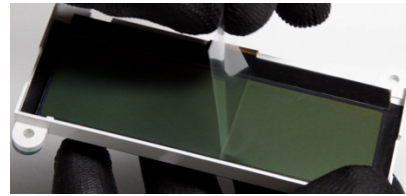
9-Remove the protective film



10-Fix and fit the centralized display



11 - Fit the display flat cable

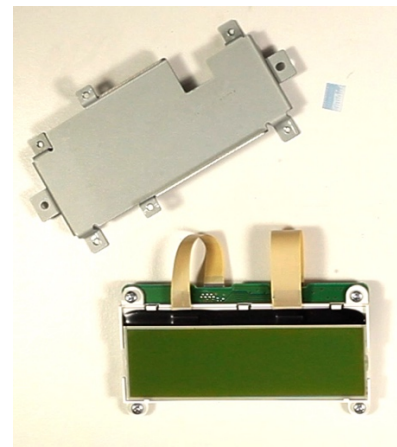
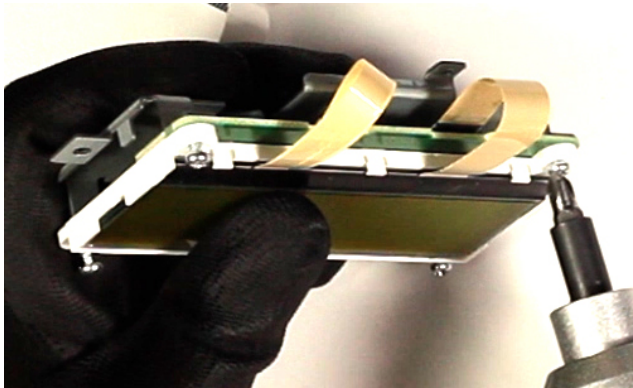


12-Remove the protective film

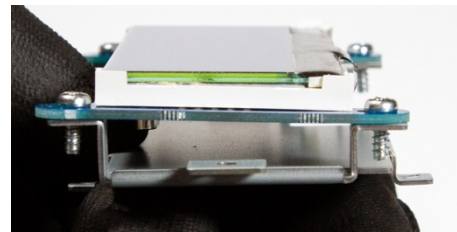
With this option, there are no mechanical adaptations for either the TD-12 or TD-20/X module, simply fix the backlight as it was before it was removed and reassemble the module.

Display White or Blue on the TD12 module

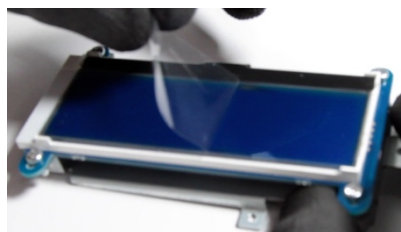
The TD12 module is simple and straightforward to change. No assistance is required. Simply attach it to the iron bracket.



1 - Remove the display from the stand



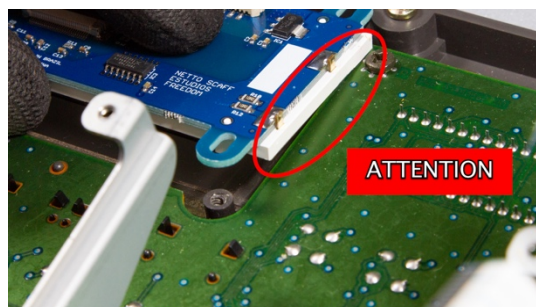
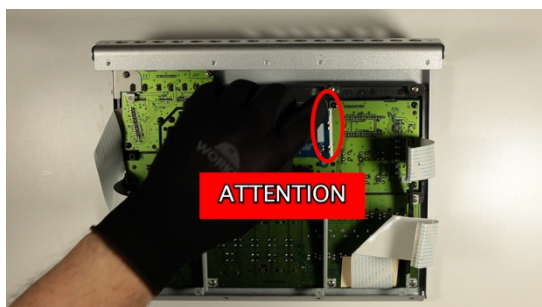
2-Fix TD-120 to the bracket



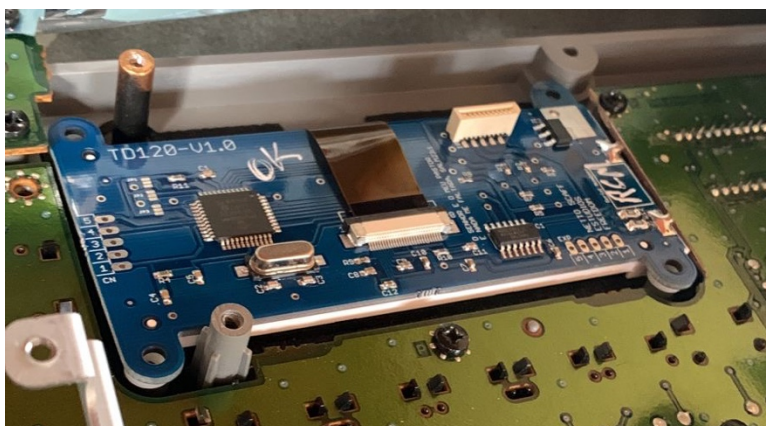
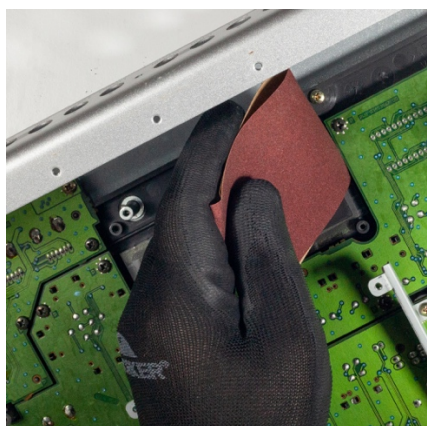
3-Remove the film and attach it to the base.

Display White or Blue on the TD20 and X module

On the TD20 or TD20/X with the color change to white or blue, a small adjustment on one side will be necessary for a perfect fit.



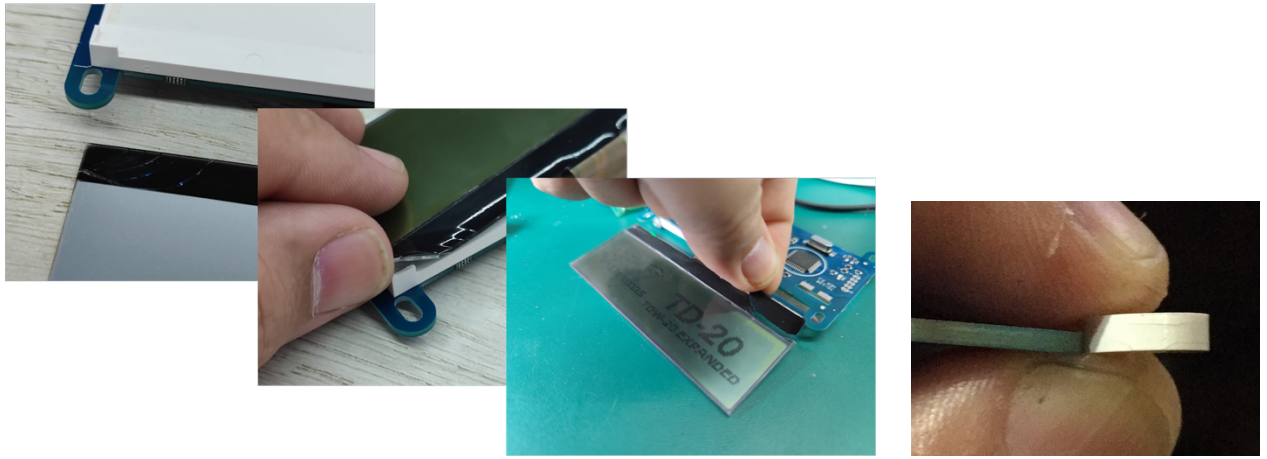
1 - Attention, the right side will not fit. Don't force it.



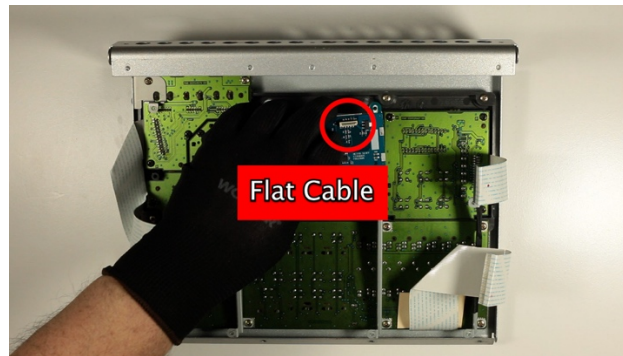
2-You will need to sand it down by 2mm. Test the fit.



3-Use white glue to fix the washers



4-The TD-120 plate is thinner than the original backlight, so without the washers it can break. The warranty does not cover this type of assembly error.



5- Watch out for the position of the flat cable

Visit our websites and our YouTube channel for more information and support.

www.td120lcd.com

and

www.drk120.com

